



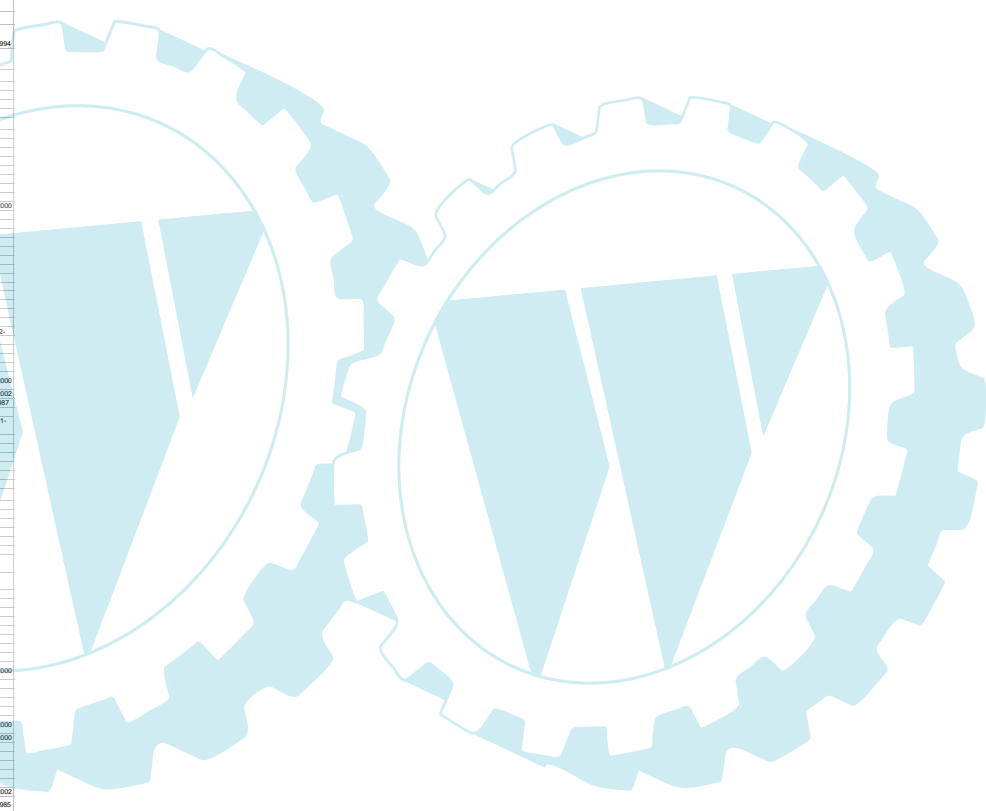
File:002010092BC Version: 1.0 Date: 26th Oct, 2010

Petrol brush cutter--GDB30B

Pos. No.	Part code	English	QTY	Availability		Remark
				in stock	in order	
1	902908	engine assy	1			
2	B422010F	tapping screw s4.8x20	2	Y		
3	B345006	torx screw M5x20	4	Y		GBT 2672-1986
4	B500005	spring washer 5	12	Y		GBT 93-1987
5	B504005H	washer 5	11	Y		GBT 97.1-2002
6	901000	rear cover	1			
7	901300	gasket rear cover	1			
8	901001	screw assy-filter cover	1			
9	901002	air filter cover	1			
10	901305	air filter	1		Y	
11	B228002	Hexagon nut M5	2	Y		GBT 6177.1-2000
12	901003	filter support	1			
13	901306	gasket filter	1			
14	901900A	carburetor	1			
15	901307	gasket carburetor	1			
16	901004	intake seat1	1			
17	901308	gasket intake seat1	1			
18	902201	compression assy	1			
19	B700419	ball bearing 6201-1P53	1			GBT 276-1994
20	B345013	torx screw M5x23	2			
21	901005	intake seat2	1			
22	901234	Hexagon head bolt M5x62	2			
23	901309	gasket intake seat2	1			
24	901212	cylinder	1			
25	902700	spark plug NHSP LD LBRTF	1		Y	
26	901304	gasket muffler	1			
27	901213	muffler	1			
28	901214	head shield	1			
29	901233	screw assy M5x10	2			
30	901303	gasket cylinder	1			
31	901206	piston ring	2			
32	901205	piston	1			
33	901208	ring/piston pin	2			
34	901207	pinion pin	1			
35	901210	connecting rod assy	1			
36	901700A	engine cable assy	1			
37	901211	crankcase	1			
38	901704	ignition coil	1			
39	901302	oil seal 12x28x7	1			
40	B700414	ball bearing 6001-2RS P53	1			GBT 276-1994
41	901235	torx screw assy M4x20	2	Y		
42	901031	fuel cap assy	1			
43	901010	fuel cap	1			
44	901310	gasket fuel cap	1			
45	900310	vent	1			
46	900305	vent hose	1			
47	900304	cap-retainer	1			
48	901026	inlet fuel pipe	1			
49	901315	inlet fuel hose	1			
50	900314	outlet fuel hose	1			
51	901313	fuel filter	1		Y	
52	901312	bumper 2	1			
53	901009	fuel tank	1			
54	900307	silver adhesive paper	1			
55	901311	bumper 1	2			
56	B34023	lock screw M5x20	3			GBT 70.1-2000
57	901301	gasket fuel tank	1			
58	901703	flyng wheel	1			
59	900222	spacer	1			
60	900205	orientation tube	1			
61	901032	starter assy	1			
62	B42001F	tapping screw s4.8x12	3			
63	901222	starter plate	1			
64	901314	starter gear	1			
65	901007	starter pulley	1			
66	901006	starter spring assy	1			
67	901008	starter egg	1			
68	901033	starter cover	1			
69	901303	throttle frame	1			
70	B345012	torx screw M5x18	4			GBT 2672-
71	902004	clutch-sprocket	1			
72	900303	clutch-body assy	1			
73	B20014	E ring	1			
74	900202	clutch-hub assy	1			
75	B30424	Hexagon socket head cap screw M5x25	2			GBT 70.1-2000
76	B504005H	washer 5	6			GBT 97.1-2002
77	B500005	spring washer 6	6			GBT 93-1987
78	B42009F	tapping screw s5 x20	4	Y		
79	B21700A	Providing torque type hexagon nuts	2			GBT 883.1-2000
80	900206	Clamp Drive Shaft Tube	1			
81	902246	upper tube assy	1			
82	901239	serrated lock washer	4			
83	900229	washer	1			
84	901278	upper flexible shaft	1			
85	901018	upper classic support	1			
86	901002	washer	2			
87	900200	spring	1			
88	901224	socket flexible shaft	1			
89	901290	upper tube	1			
90	901317	spacer	1		Y	
91	901229	coupler	1		Y	
92	901020	lock assy	1		Y	
93	902300	knapping ring	1			
94	B305001	Hexagon socket head cap lock screw M6x15	1		Y	
95	900300	lock screw M6x15	1			
96	900241	lower tube assy	1			
97	901018	lower classic support	1			
98	900239	lower tube	1			
99	901218	lower flexible shaft	1			
100	900701	throttle cable assy	1			
101	900216	left handle U handle	1			
102	900290	tube-U handle	1			
103	B30424	Hexagon socket head cap screw M5x25	2			GBT 70.1-2000
104	900233	arc block/3	1			
105	900307	cushion arc block	2			
106	900232	arc block/2	1			
107	900231	arc block/1	1			
108	B30424	Hexagon socket head cap screw	4			GBT 70.1-2000
109	B30422	inner Hexagon screw MEX35	1	Y		GBT 70.1-2000
110	900202	right half of right handle	1			
111	900207	throttle lock	1			
112	900201	spring button	1			
113	B200096	1/2" clasp 1	1			
114	901706	stop switch	1			
115	B204004H	washer 4	4	Y		GBT 97.1-2002
116	B400002	Cross recessed pan head tapping screws ST2.9x9.5	2			GBT 845-1985
117	B400004	Cross recessed pan head tapping screws ST2.9x9.5	7	Y		GBT 845-1985
118	900315	padlock block	1			
119	900203	lockout button	1			
120	900203	spring/lockout button	1			
121	900011	left cover rear handle	1			
122	902014	throttle trigger	1			
123	900202	spring throttle trigger	1			
124	B201002	Hexagon nut M6	1			GBT 41-2000
125	B345004	Torx screw MEX12	1			GBT 2672-
126	B345019	inner Hexagon screw MEX30	1	Y		GBT 70.1-2000
127	900237	gear box assy	1			
128	B276016	Hole Snap Ring 24	1			GBT 893.1-1986
129	B278007	Axial Spring Collar 9	1			GBT 894.1-1986
130	B700429	ball bearing 609-2	1			GBT 276-1994
131	B700430	ball bearing 609	1			GBT 276-1994
132	902214	drive shaft	1			
133	902213	body-gear box	1			
134	B125003	Hexagon head bolt MEX12	1			GBT 6781-
135	B700410	ball bearing 6000-5p3	1			GBT 276-1994
136	902215	driven gear	1			
137	902216	driven shaft	1			
138	B700413	ball bearing 6201-5	1			GBT 276-1994
139	B276022	Hole Snap Ring 32	1			GBT 893.1-1986
140	902301	oil seal 17x32x7	1			
141	900277	tube	1			
142	900303	cover gland	1			
143	B500004	spring washer 4	3	Y		GBT 93-1987
144	B340203	inner Hexagon screw MEX12	3	Y		GBT 70.1-2000
145	900218	active spacer	1			
146	902221	blade	1			
147	900308	knife sheath	3			
148	900219	clamp spacer	1			
149	900223	Hexagon tie assy M10	1			
150	900205	inner hexagon spanner 5	1			
151	900204	inner hexagon spanner 4	1			
152	900203	inner hexagon spanner 3	1			
153	900300	socket wrench	1			
154	901025	attachment hanger	1			

REMARKS:

- The above quotations are based on PMB/EUR-0.2170.
- PMB: when increase over 5%, the price should be adjustable.
- If main material fluctuated more than 5%, the price should be adjustable.
- Prices normally valid for one year from the day we offer, except the case we consider it invalid.
- All prices should be subject to our final confirmation.



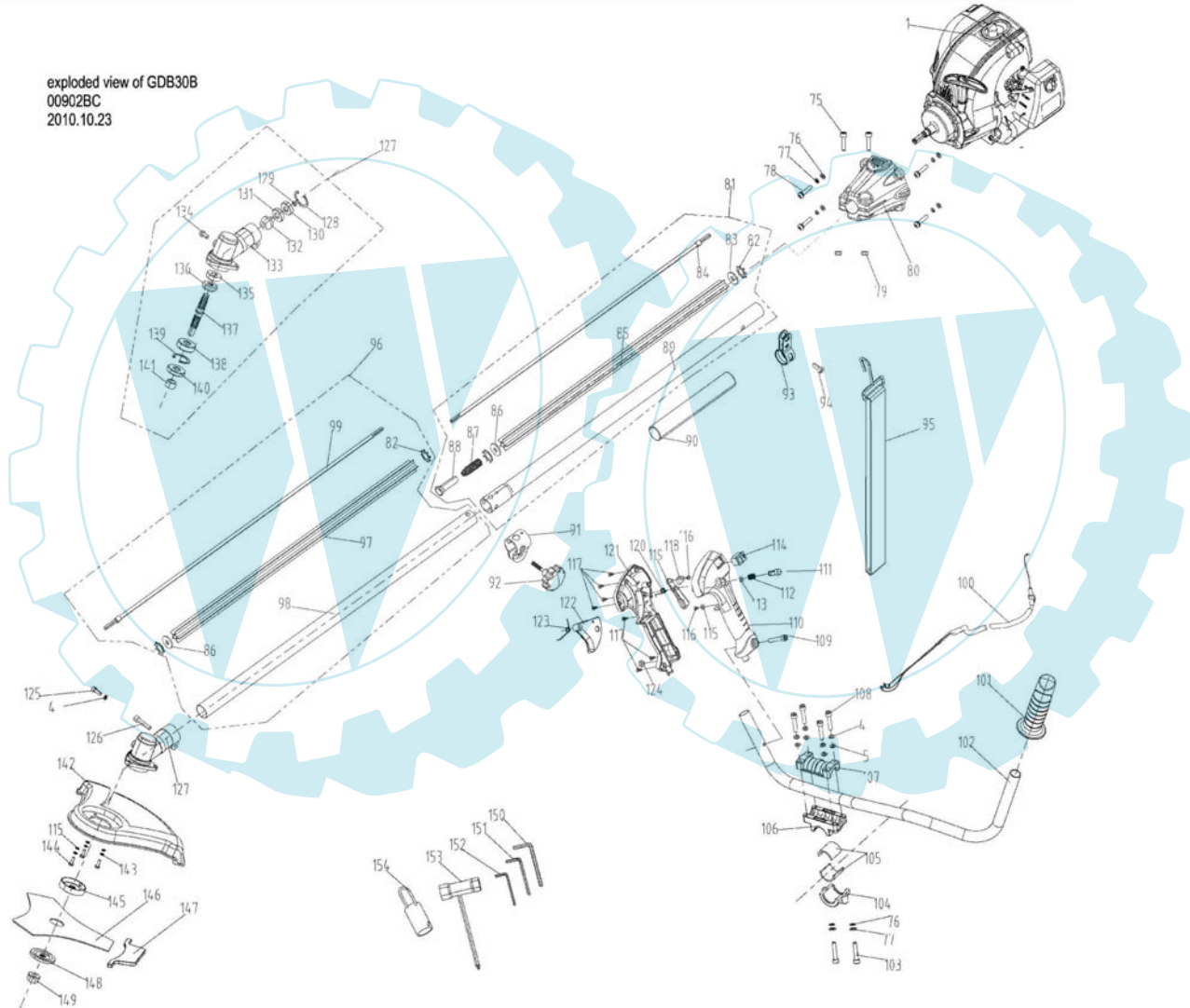
PowerG® **EXPLOSIVE DRAWING**

Petrol brush cutter--GDB30B

File: 0020100902BC

Version: 1.0

Date: 26th Oct, 2010



exploded view of GDB30B
00902BC
2010.10.23

